

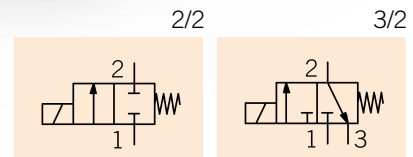


ITALIAN QUALITY AND FLEXIBILITY

E.V. 15 mm LTC

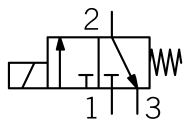
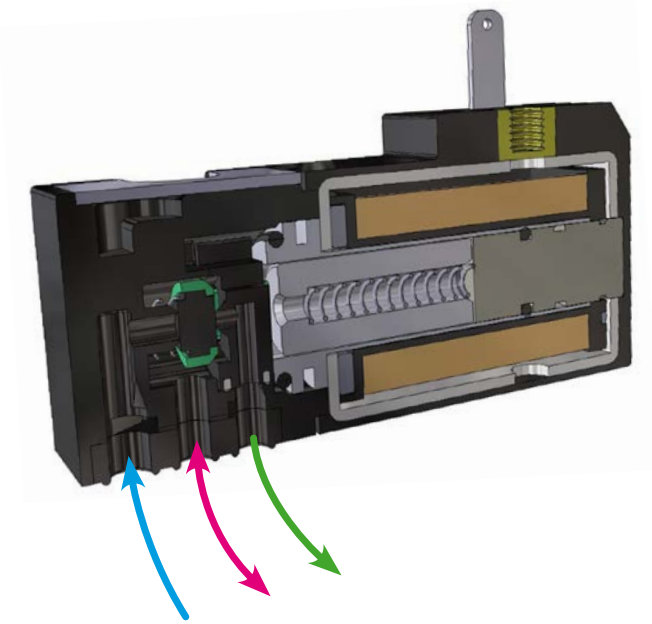
No energy consumption - No heating
Ideal for battery/portable applications

Nessun consumo di energia - Senza surriscaldamento
Ideale per applicazioni portatili/a batteria

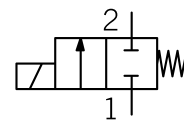
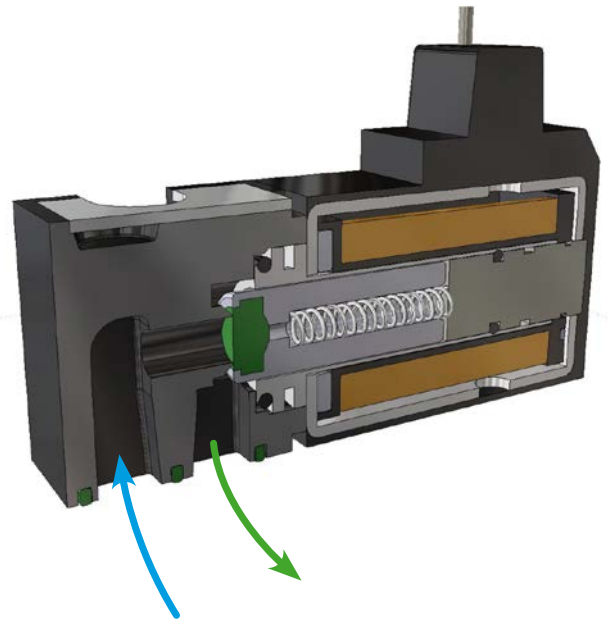


Latching solenoid valve consisting of an independent “click”-separable valve body with an integrated permanent magnet available either with a three-contacts double coil or with a single traditional coil, both wound by an insulated copper wire class H (180°C) and injection-encapsulated in a glass fiber reinforced polyamide polymer. This solution allows to switch the plunger position by a short simple pulse, then the valve keeps its state until the next pulse, in case of the single coil at reversed polarity.

Microvalvola bistabile costituita da un corpo valvola indipendente a magnete permanente e separabile a “click”, disponibile sia con doppia bobina a tre contatti e polo comune sia con bobina singola di tipo tradizionale, entrambe avvolte con filo di rame smaltato classe H (180°C) ed inglobate ad iniezione con tecnopolimero poliammide caricato fibra vetro. Questa soluzione costruttiva consente la commutazione da uno stato all'altro tramite un semplice impulso di breve durata, dopodiché la valvola mantiene il suo stato senza bisogno di energia fino al successivo impulso, a polarità invertita nel caso della bobina singola.



3/2 STD LATCHING



2/2 HF LATCHING



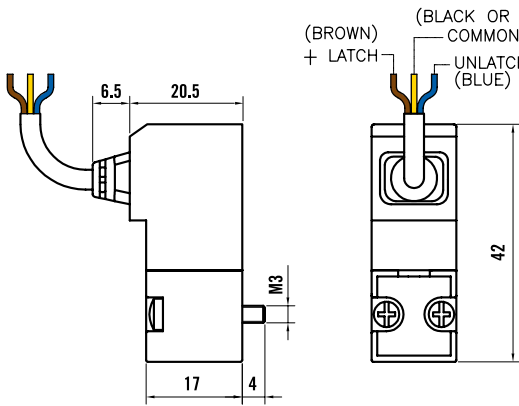
TECHNICAL SPECIFICATIONS

15 mm LTC

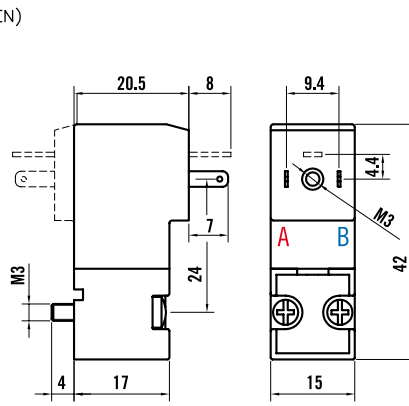
| | 15 mm 3/2 STD pneumatic interface | | 15 mm 2/2 HF pneumatic interface | |
|---------------------------------|---|---------------------------------|--|--------------------------|
| | Ø 1.1 mm 3/2 or 2/2 MONO-DIR | Ø 1.6 mm 3/2 or 2/2 MONO-DIR | Ø 2.5 mm 2/2 MONO-DIR | Ø 3.0 mm 2/2 MONO-DIR |
| Working pressure [bar] | 0 - 10 bar | | 0 - 3 bar | |
| Flow rate [l/min] | 36 @ 6 bar (ΔP 1 bar) | | 105 @ 3 bar | |
| Power [Watt] | 4 W * 2.5 W ** | 4 W * 2.5 W ** | 4 W * 2.5 W ** | 4 W * 2.5 W ** |
| Voltages DC [Volt] | 5 - 6 - 12 - 24 V DC | | 5 - 6 - 12 - 24 V DC | |
| Voltage tolerance | ±10% | | ±10% | |
| Latching pulse time (suggested) | > 40 msec | | > 40 msec | |
| Electrical insulation | 1000 V AC | | 1000 V AC | |
| Wire insulation class | H (180° C) | | H (180° C) | |
| Coil resistance tolerance | +/-5% | | +/-5% | |
| Fluid/ambient temperature | -10° / +50° C | | -10° / +50° C | |
| Life expectancy | > 50 Million cycles | | > 50 Million cycles | |
| Fixing | 2 screws M3 | | 2 screws M3 | |
| Weight | 35 gr | | 35 gr | |
| Protection degree (IEC 60529) | IP65 (coil with cables, faston and M12) | | IP51 (coil with 90° or Line connector) | |

* with latching coil (3 contacts) - common/latch/unlatch

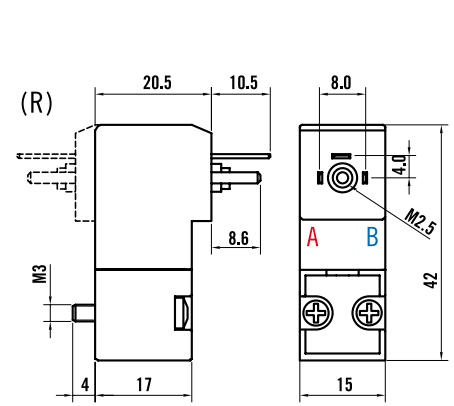
** with single coil (2 contacts) - reverse polarity to latch/unlatch



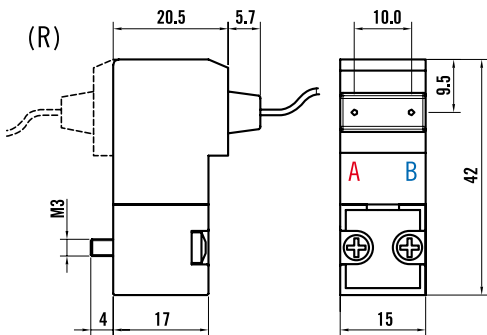
3-CONTACTS LATCHING DOUBLE COIL
3-CONTATTI BISTABILI DOPPIA BOBINA



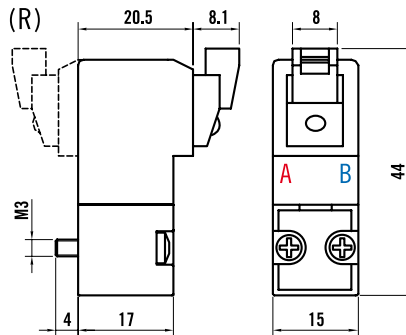
FASTON STD [+ GROUND OPTIONAL FOR DC VERSION)
FASTON STD [+ TERRA OPZIONALE PER VERSIONE DC]



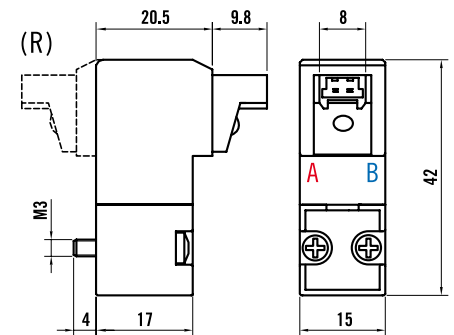
DIN FASTON 43650-C
FASTON DIN 43650-C



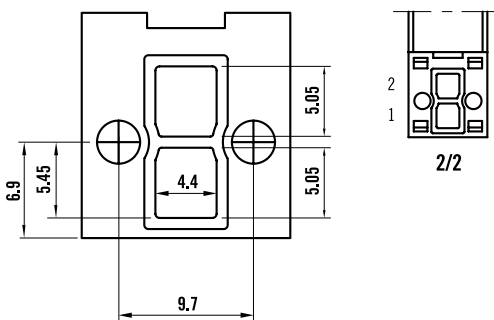
ENCAPSULATED CABLES
CAVI INGLOBATI



LINE CONNECTOR
CONNETTORE LINEA



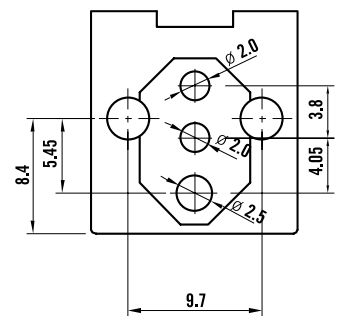
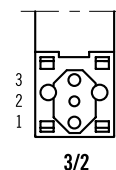
90° CONNECTOR
CONNETTORE 90°



2/2 HF PNEUMATIC INTERFACE

PULSE 40 msec

| PULSE | A | B |
|---------------|---|---|
| Latch/Open | - | + |
| Unlatch/Close | + | - |



3/2 STD PNEUMATIC INTERFACE

| 1 | 2 | 3 |
|----|-----|-----|
| IN | OUT | EXH |

CODIFICATIONS

15 mm LTC

| L | 5 | FUNCTION | VOLTAGE | / | (R) | ELECTRICAL CONNECTION | ORIFICE SIZE |
|---|---|---------------------|------------|---|-----------------------|--|--------------|
| | | 3 = 3/2 STD | 1 = 24 Vdc | | R = Rotated coil 180° | 0 = Faston standard (9.4 mm) | A = Ø 1.1 mm |
| | | 2 = 2/2 (STD or HF) | 2 = 12 Vdc | | | 1 = Faston DIN form-C (8 mm) | B = Ø 1.6 mm |
| | | | 4 = 6 Vdc | | | 2 = Encapsulated cables 300 mm | C = Ø 2.5 mm |
| | | | 6 = 5 Vdc | | | 3 = M12 circular connector | D = Ø 3.0 mm |
| | | | | | | 6 = 90° Connector | |
| | | | | | | 7 = Line Connector | |
| | | | | | | 4 = Cable length 300 mm | |
| | | | | | | 5 = Cable length 500 mm | |
| | | | | | | 8 = Cable length 1mt | |
| | | | | | | 9 = Cable 175 mm + wire-to-board connector SPOX 5264 series (Molex p/n 50-37-5033) | |



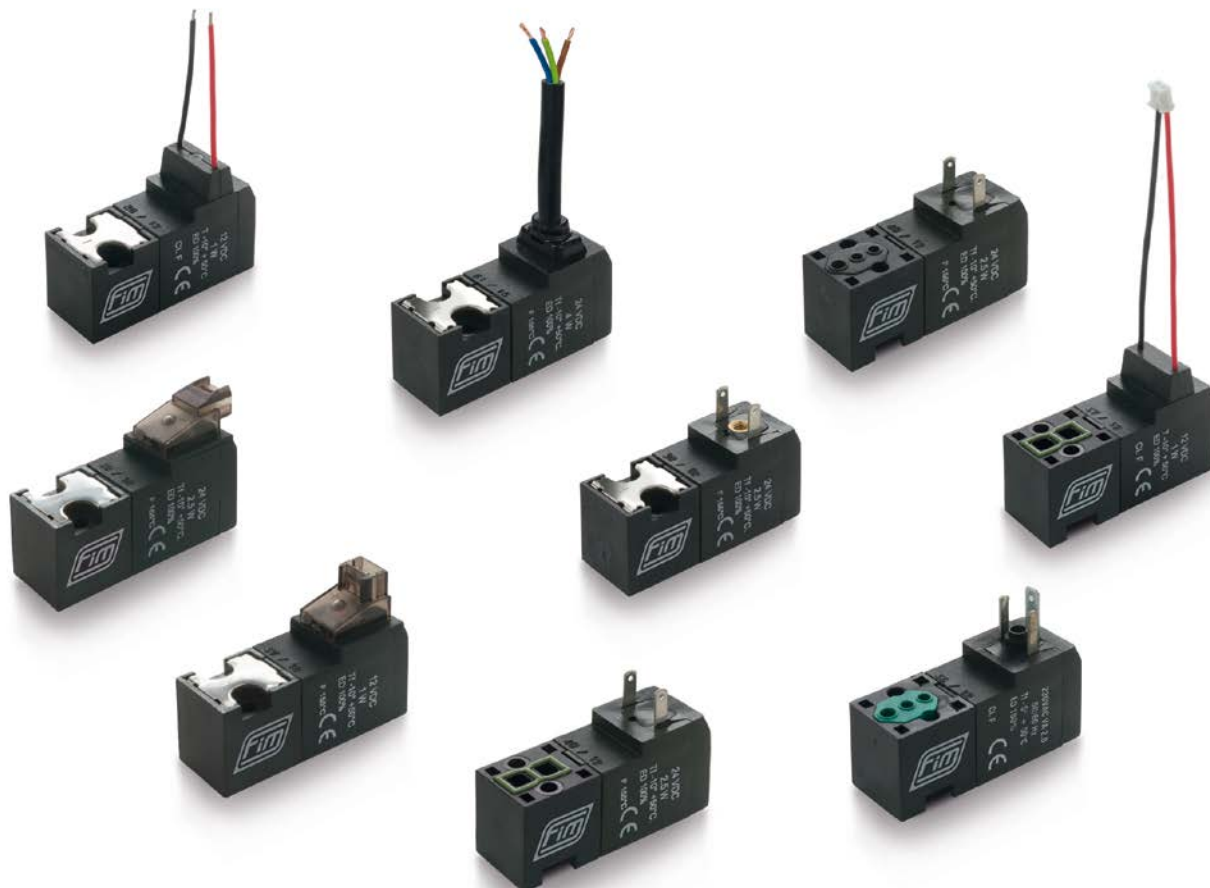
Example: **L534/4B** = 15 mm 3/2 LATCHING 6 Vdc 4 W Cables 300 mm Ø 1.6 mm 7 bar

Customizations available on request

- Voltages (Volt)
- Powers (Watt)
- Electrical connectors (Molex, Tyco, Hirose, Jst)
- IP Protection (Potting compound for applications IP 67)
- Pressures (bar)
- Silent operated for quiet environment

Personalizzazioni disponibili su richiesta

- Tensioni (Volt)
- Potenze (Watt)
- Connettori elettrici (Molex, Tyco, Hirose, Jst)
- Protezione IP (Resinatura per applicazioni IP 67)
- Pressioni (bar)
- Funzionamento silenzioso per ambienti quieti



Some examples of 15 mm LTC
Alcuni esempi di valvole 15 mm LTC

traceability code
codice di rintracciabilità

WW Y XXXXX
week | year | valve body ref.
...
A = 2013
B = 2014
C = 2015
D = 2016
E = 2017
F = 2018
...



Coil can be rotated in any position with a "click" system
Bobina orientabile in ogni posizione con sistema a "click"

MODULAR
SYSTEM
PATENTED IN 1996

SISTEMA
COSTRUTTIVO
MODULARE
BREVETTATO DAL 1996



ITALIAN QUALITY AND FLEXIBILITY